

for youth

The combination of outdoor, hide-and-seek type game, technology and competition is guaranteed to get 100% positive response from youngsters. There has been a steady input of **ARDF** equipment into many UK scout centres, supported by dedicated amateurs.

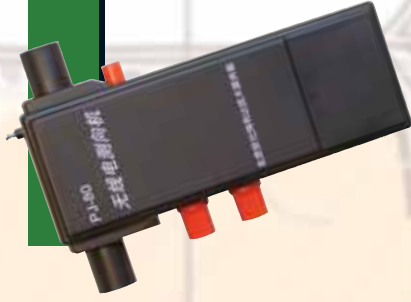


ARDF is exposing Amateur Radio and Orienteering to a new generation of youngsters.

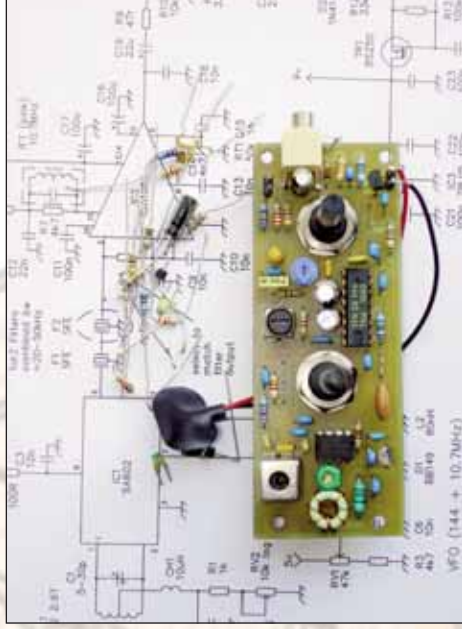
AMATEUR RADIO DIRECTION FINDING

equipment

Amateur Radio enthusiasts are the primary source for kits, ready built or imported receivers.



construction



Many amateurs will design and build their own equipment. **ARDF** is one of the last bastions of home built equipment. A simple non-channelised AM receiver integrated with a lightweight antenna is the preferred solution for most competitors, although a modified amateur band handheld radio will often suffice. Build a simple **ARDF** receiver as a school or club project.

contact

RSGB: 3 Abbey Court, Fraser Road, Priory Business Park, Bedford, MK44 3WH
+44 (0)1234 832 700

WWW: For a source of information on events, equipment, rules and helpful tips:
Go to - Radio Sport on www.rsgb.org

MOVE IN THE RIGHT DIRECTION

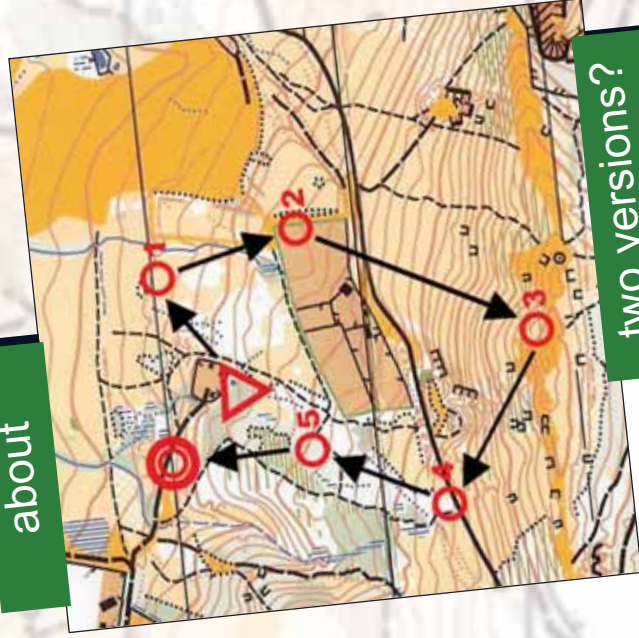


AMATEUR RADIO DIRECTION FINDING

RADIO TRACKING, ORIENTEERING, WALKING / RUNNING

Up to five transmitters (or "foxes") are situated in woodland and the objective is to work out their locations from radio bearings and then visit them, on foot, as quickly as possible.

about



two versions?

ARDF on 80m (short wave) allows the use of tiny handheld radios capable of taking very accurate bearings. 80m ARDF gives a distinct advantage to the quickest on foot.

ARDF on 2m (VHF) is more technically challenging because radio reflections from trees and terrain will often obscure the true transmitter location.

EQUIPMENT - CONSTRUCTION EXPERIMENTATION COMPETITION

radio sport for all



It's either the ultimate competitive outdoor sport, a mental challenge for you and a test of your equipment, or just a great fresh-air pastime taken at a more leisurely pace!

START
HERE!



Combine your amateur radio interest with a day in the open air, as a step towards a more healthy lifestyle.

ARDF provides additional challenges for the orienteer. Controls are co-located with a radio beacon, but their position is not shown on your map, only the course start and finish!

You will have to decide a route and the order to visit each control by interpretation of the received beacon signals. Your radio bearing may initially be ambiguous and you will need to refine your route plan as you progressively uncover the location of the controls.



for orienteers



ARDF has international competitions for the elite or adventurous.

APPLY HERE FOR GB REPRESENTATION !